


## Sobrevida y factores predictores de fallo del injerto renal en pacientes del Hospital Provincial Docente Clínico Quirúrgico “Manuel Ascunce Domenech”, Camagüey

### Survival and predictors of renal graft failure in patients from "Manuel Ascunce Domenech" Provincial Surgical-Clinical and Teaching Hospital, Camagüey

Ivan Antonio Quiñones-Borrell<sup>1</sup>, Mayelin Hernández-Rodríguez<sup>1</sup>, Lisbet Artola-Matos<sup>2</sup>

<sup>1</sup>Universidad de Ciencias Médicas de Camagüey. Departamento de Informática Médica. Camagüey. <sup>2</sup>Hospital Provincial Docente Clínico Quirúrgico “Manuel Ascunce Domenech”. Camagüey. Cuba.

Recibido: 26 de enero de 2023

Aprobado: 13 de abril de 2023



## DATOS SUPLEMENTARIOS

### Detalles del análisis estadístico

#### Kaplan-Meier

		Notes
Output Created		
Comments		
Input	Data	
	Active Dataset	ConjuntodeDatos2
	Filter	<none>
	Weight	<none>
	Split File	<none>
	N of Rows in Working Data	
	File	843



Citar como: Quiñones-Borrell IA, Hernández-Rodríguez M, Artola-Matos L. Sobrevida y factores predictores de fallo del injerto renal en pacientes del Hospital Provincial Docente Clínico Quirúrgico “Manuel Ascunce Domenech”, Camagüey. Revista Electrónica Dr. Zoilo E. Marinello Vidaurreta. 2023; 48: e3291. Disponible en: <https://revzoilomarinellosld.cu/index.php/zmv/article/view/3291>.



Missing Value Handling	Definition of Missing Cases Used	User-defined missing values are treated as missing.	
Syntax		Statistics are based on all cases with valid data for all variables in the analysis.	
		KM TSUPERV.SIMPLE.MESES	
		/STATUS=ESTADO(1)	
		/PRINT MEAN	
		/PLOT SURVIVAL.	
Resources	Processor Time		00:00:01,75
	Elapsed Time		00:00:08,69

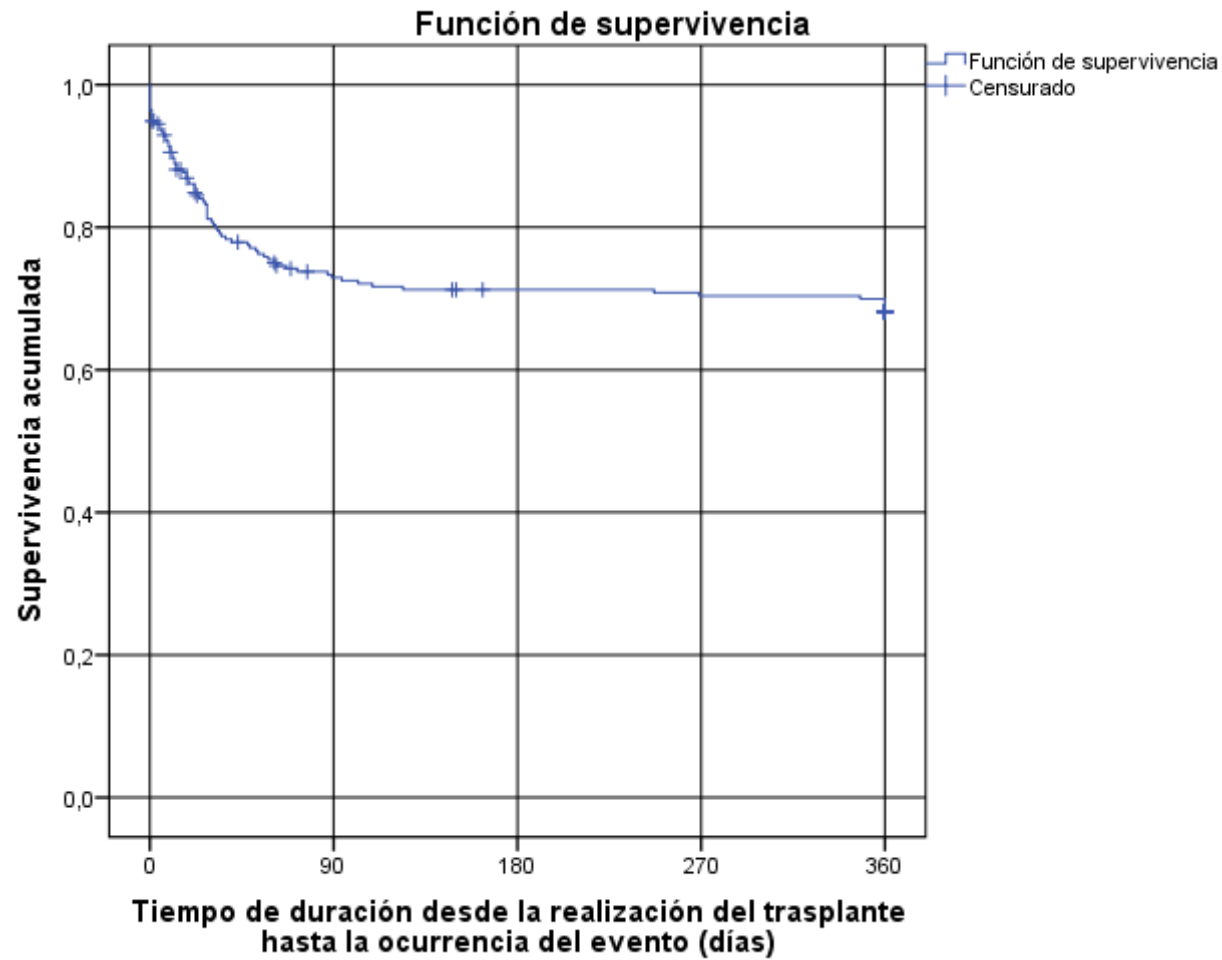
**Case Processing Summary**

Total N	N of Events	Censored	
		N	Percent
255	78	177	69,4%

**Means and Medians for Survival Time**

Mean <sup>a</sup>				Median			
Estimate	Std. Error	95% Confidence Interval		Estimate	Std. Error	95% Confidence Interval	
		Lower Bound	Upper Bound			Lower Bound	Upper Bound
263,850	9,638	244,959	282,741	.	.	.	.

a. Estimation is limited to the largest survival time if it is censored.



```
KM TSUPERV.SIMPLE.MESES BY FUNCION.INICIAL  
/STATUS=ESTADO(1)  
/PRINT MEAN  
/PLOT SURVIVAL  
/TEST LOGRANK  
/COMPARE OVERALL POOLED.
```

**Kaplan-Meier****Notes**

Output Created		
Comments		
Input	Data	
	Active Dataset	ConjuntodeDatos2
	Filter	<none>
	Weight	<none>
	Split File	<none>
	N of Rows in Working Data File	843
Missing Value Handling	Definition of Missing	User-defined missing values are treated as missing.
	Cases Used	Statistics are based on all cases with valid data for all variables in the analysis.
Syntax		<pre> KM TSUPERV.SIMPLE.MESES BY FUNCION.INICIAL /STATUS=ESTADO(1) /PRINT MEAN /PLOT SURVIVAL /TEST LOGRANK /COMPARE OVERALL POOLED. </pre>
Resources	Processor Time	00:00:01,23
	Elapsed Time	00:00:00,53

**Case Processing Summary**

Función inicial	Total N	N of Events	Censored	
			N	Percent
SI	84	12	72	85,7%
NO	171	66	105	61,4%
Overall	255	78	177	69,4%

**Means and Medians for Survival Time**

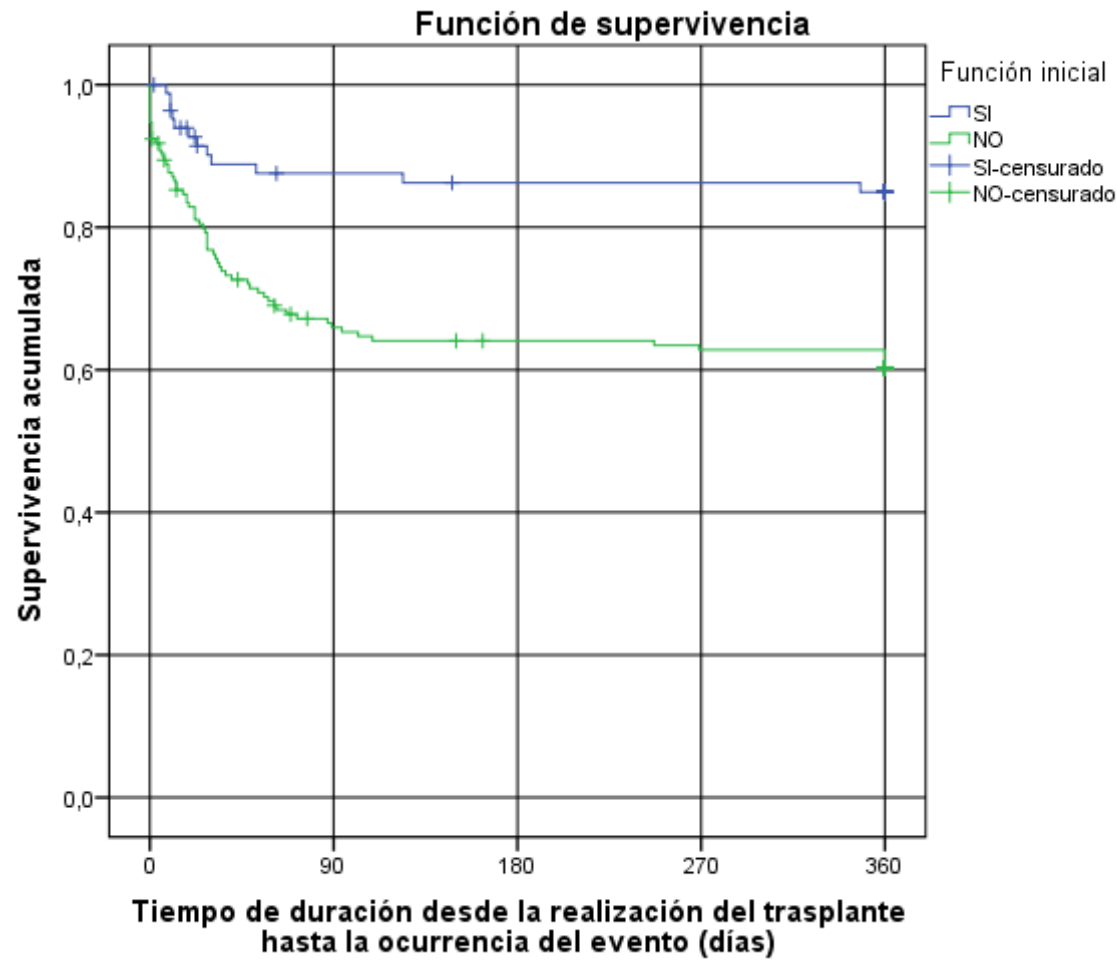
Función inicial	Mean <sup>a</sup>				Median			
	Estimate	Std. Error	95% Confidence Interval		Estimate	Std. Error	95% Confidence Interval	
			Lower Bound	Upper Bound			Lower Bound	Upper Bound
SI	314,537	12,746	289,555	339,519	.	.	.	.
NO	239,603	12,439	215,223	263,983	.	.	.	.
Overall	263,850	9,638	244,959	282,741	.	.	.	.

a. Estimation is limited to the largest survival time if it is censored.

**Overall Comparisons**

	Chi-Square	df	Sig.
Log Rank (Mantel-Cox)	14,197	1	,000

Test of equality of survival distributions for the different levels of Función inicial.



```
KM TSUPERV.SIMPLE.MESES BY USO.MONO  
/STATUS=ESTADO(1)  
/PRINT MEAN  
/PLOT SURVIVAL  
/TEST LOGRANK  
/COMPARE OVERALL POOLED.
```

**Kaplan-Meier****Notes**

Output Created		
Comments		
Input	Data	
	Active Dataset	ConjuntodeDatos2
	Filter	<none>
	Weight	<none>
	Split File	<none>
	N of Rows in Working Data File	843
Missing Value Handling	Definition of Missing	User-defined missing values are treated as missing.
	Cases Used	Statistics are based on all cases with valid data for all variables in the analysis.
Syntax		<pre> KM TSUPERV.SIMPLE.MESES BY USO.MONO /STATUS=ESTADO(1) /PRINT MEAN /PLOT SURVIVAL /TEST LOGRANK /COMPARE OVERALL POOLED. </pre>
Resources	Processor Time	00:00:00,52
	Elapsed Time	00:00:00,30

**Case Processing Summary**

Uso de monoclonales o policlonales	Total N	N of Events	Censored	
			N	Percent
SI	162	57	105	64,8%
NO	93	21	72	77,4%
Overall	255	78	177	69,4%

**Means and Medians for Survival Time**

Uso de monoclonales o policlonales	Mean <sup>a</sup>				Median			
	Estimate	Std. Error	95% Confidence Interval		Estimate	Std. Error	95% Confidence Interval	
			Lower Bound	Upper Bound			Lower Bound	Upper Bound
SI	248,194	12,649	223,402	272,986	.	.	.	.
NO	290,745	14,527	262,272	319,218	.	.	.	.
Overall	263,850	9,638	244,959	282,741	.	.	.	.

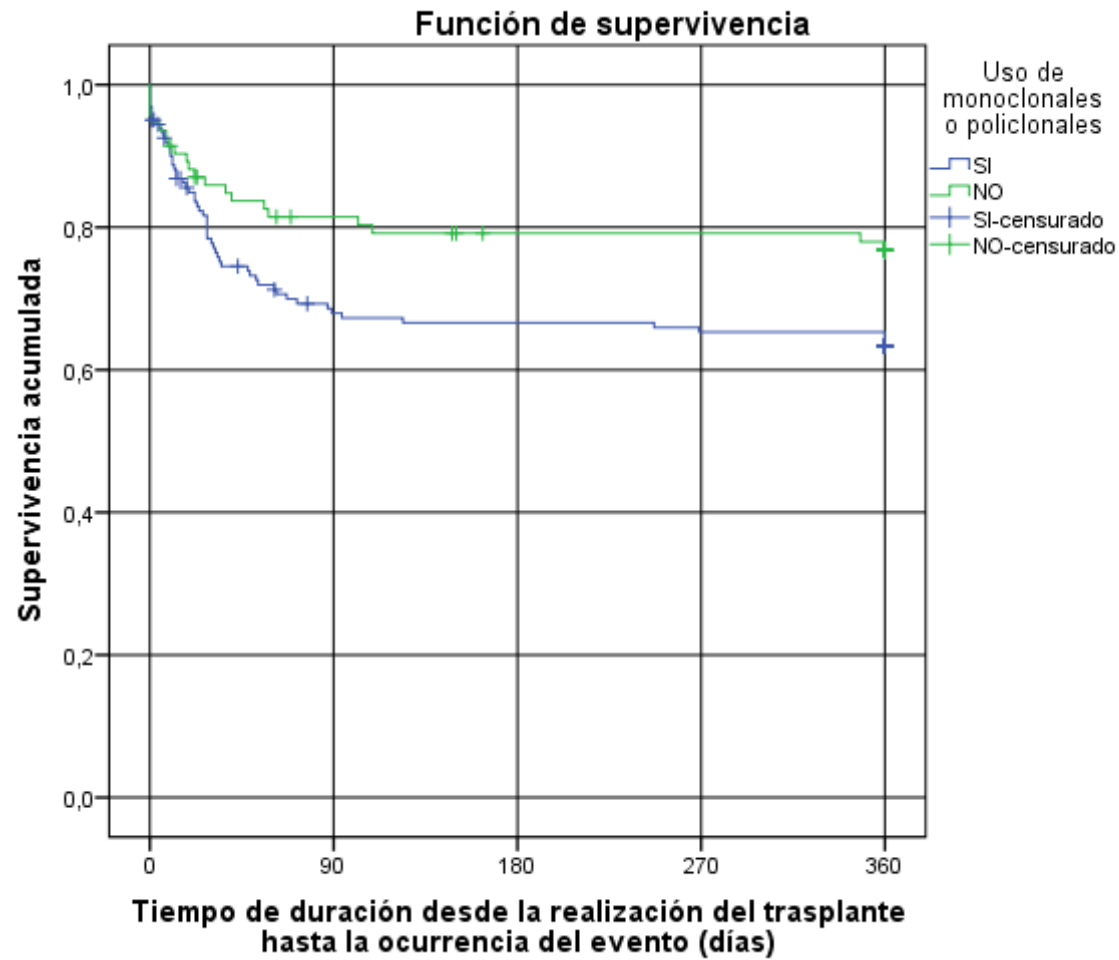
a. Estimation is limited to the largest survival time if it is censored.

**Overall Comparisons**

	Chi-Square	df	Sig.
Log Rank (Mantel-Cox)	4,378	1	,036

Test of equality of survival distributions for the different levels of Uso de monoclonales o policlonales.





```

KM TSUPERV.SIMPLE.MESES BY RECHAZO.AGUDO
/STATUS=ESTADO(1)
/PRINT MEAN
/PLOT SURVIVAL
/TEST LOGRANK
/COMPARE OVERALL POOLED.
    
```

**Kaplan-Meier**

**Notes**

Output Created		
Comments		
Input	Data	
	Active Dataset	ConjuntodeDatos2
	Filter	<none>
	Weight	<none>
	Split File	<none>
	N of Rows in Working Data File	843
Missing Value Handling	Definition of Missing	User-defined missing values are treated as missing.
	Cases Used	Statistics are based on all cases with valid data for all variables in the analysis.
Syntax		<pre> KM TSUPERV.SIMPLE.MESES BY RECHAZO.AGUDO /STATUS=ESTADO(1) /PRINT MEAN /PLOT SURVIVAL /TEST LOGRANK /COMPARE OVERALL POOLED.                     </pre>
Resources	Processor Time	00:00:00,52
	Elapsed Time	00:00:00,25

**Case Processing Summary**

Rechazo agudo	Total N	N of Events	Censored	
			N	Percent
SI	40	25	15	37,5%
NO	215	53	162	75,3%
Overall	255	78	177	69,4%

**Means and Medians for Survival Time**

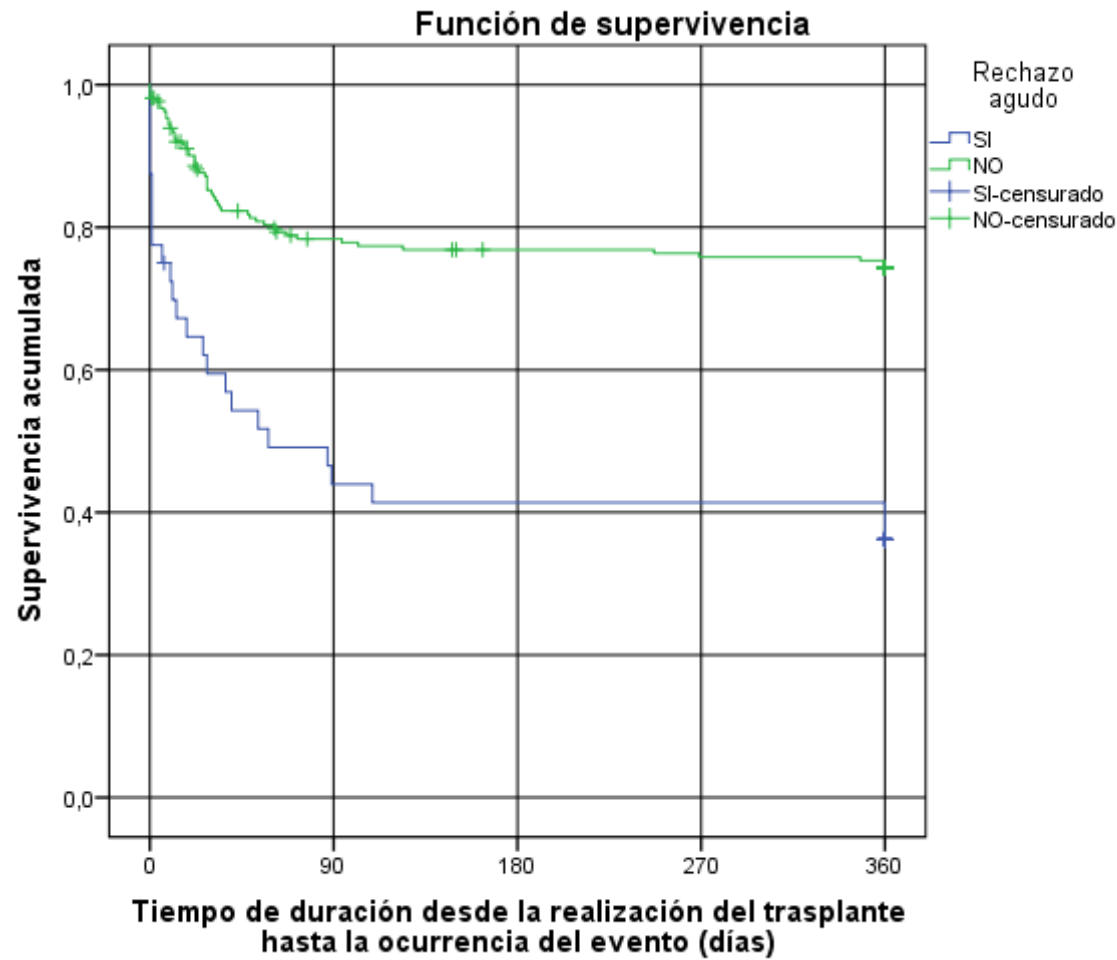
Rechazo agudo	Mean <sup>a</sup>				Median			
	Estimate	Std. Error	95% Confidence Interval		Estimate	Std. Error	95% Confidence Interval	
			Lower Bound	Upper Bound			Lower Bound	Upper Bound
SI	164,190	27,156	110,963	217,416	58,000	32,156	,000	121,026
NO	282,541	9,784	263,364	301,718	.	.	.	.
Overall	263,850	9,638	244,959	282,741	.	.	.	.

a. Estimation is limited to the largest survival time if it is censored.

**Overall Comparisons**

	Chi-Square	df	Sig.
Log Rank (Mantel-Cox)	29,463	1	,000

Test of equality of survival distributions for the different levels of Rechazo agudo.



```

KM TSUPERV.SIMPLE.MESES BY NTA
/STATUS=ESTADO(1)
/PRINT MEAN
/PLOT SURVIVAL
/TEST LOGRANK
/COMPARE OVERALL POOLED.
    
```

**Kaplan-Meier**

**Notes**

Output Created		
Comments		
Input	Data	
	Active Dataset	ConjuntodeDatos2
	Filter	<none>
	Weight	<none>
	Split File	<none>
	N of Rows in Working Data File	843
Missing Value Handling	Definition of Missing	User-defined missing values are treated as missing.
	Cases Used	Statistics are based on all cases with valid data for all variables in the analysis.
Syntax		<pre> KM TSUPERV.SIMPLE.MESES BY NTA /STATUS=ESTADO(1) /PRINT MEAN /PLOT SURVIVAL /TEST LOGRANK /COMPARE OVERALL POOLED.                     </pre>
Resources	Processor Time	00:00:00,20
	Elapsed Time	00:00:00,25

**Case Processing Summary**

Necrosis tubular aguda	Total N	N of Events	Censored	
			N	Percent
SI	130	48	82	63,1%
NO	125	30	95	76,0%
Overall	255	78	177	69,4%

**Means and Medians for Survival Time**

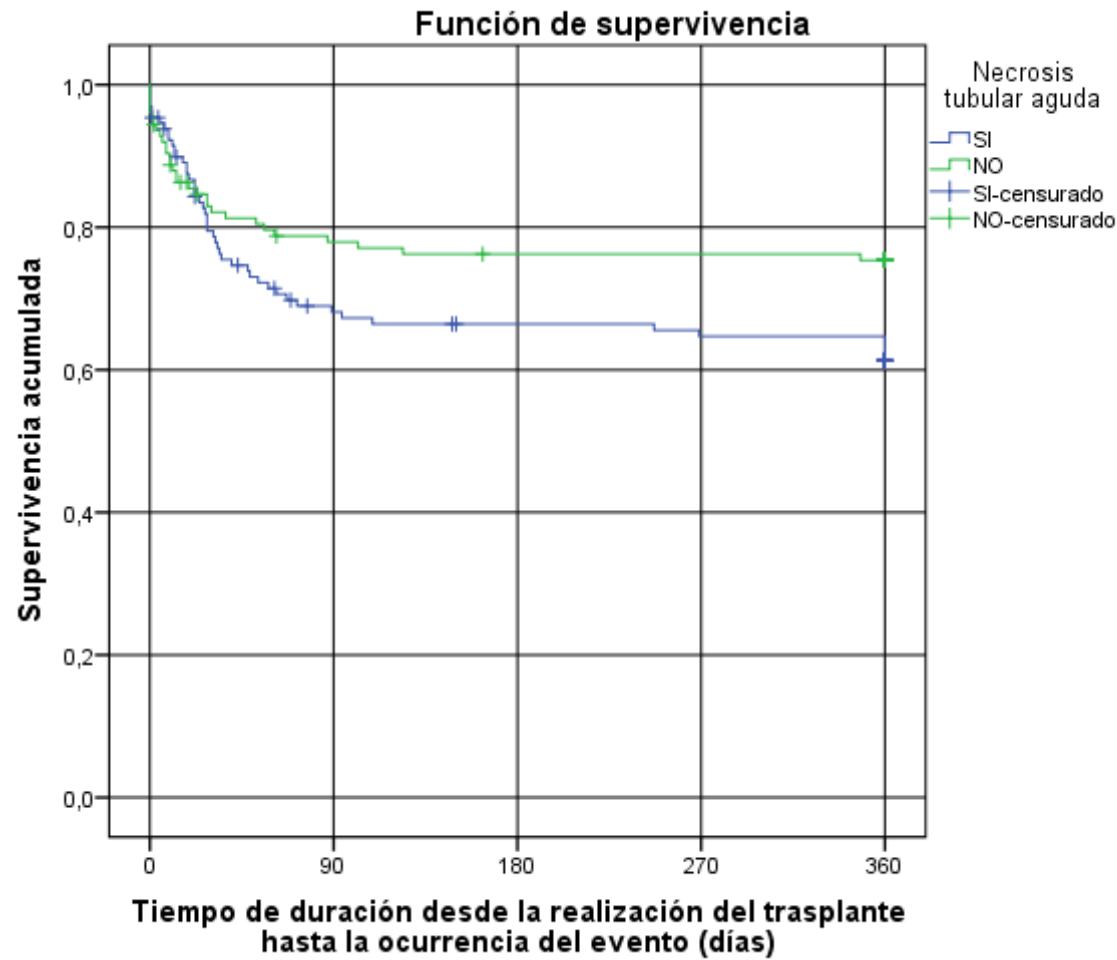
Necrosis tubular aguda	Mean <sup>a</sup>				Median			
	Estimate	Std. Error	95% Confidence Interval		Estimate	Std. Error	95% Confidence Interval	
			Lower Bound	Upper Bound			Lower Bound	Upper Bound
SI	247,756	14,064	220,191	275,322	.	.	.	.
NO	280,534	12,941	255,170	305,899	.	.	.	.
Overall	263,850	9,638	244,959	282,741	.	.	.	.

a. Estimation is limited to the largest survival time if it is censored.

**Overall Comparisons**

	Chi-Square	df	Sig.
Log Rank (Mantel-Cox)	4,335	1	,037

Test of equality of survival distributions for the different levels of Necrosis tubular aguda.



```
KM TSUPERV.SIMPLE.MESES BY INFECCION.TRACTO.URINARIO  
/STATUS=ESTADO(1)  
/PRINT MEAN  
/PLOT SURVIVAL  
/TEST LOGRANK  
/COMPARE OVERALL POOLED.
```

**Kaplan-Meier**

**Notes**

Output Created		
Comments		
Input	Data	
	Active Dataset	ConjuntodeDatos2
	Filter	<none>
	Weight	<none>
	Split File	<none>
	N of Rows in Working Data File	843
Missing Value Handling	Definition of Missing	User-defined missing values are treated as missing.
	Cases Used	Statistics are based on all cases with valid data for all variables in the analysis.
Syntax		KM TSUPERV.SIMPLE.MESES BY INFECCION.TRACTO.URINARIO /STATUS=ESTADO(1) /PRINT MEAN /PLOT SURVIVAL /TEST LOGRANK /COMPARE OVERALL POOLED.
Resources	Processor Time	00:00:00,30
	Elapsed Time	00:00:00,22

**Case Processing Summary**

Infección del tracto urinario	Total N	N of Events	Censored
-------------------------------	---------	-------------	----------





			N	Percent
SI	54	10	44	81,5%
NO	197	66	131	66,5%
Overall	251	76	175	69,7%

#### Means and Medians for Survival Time

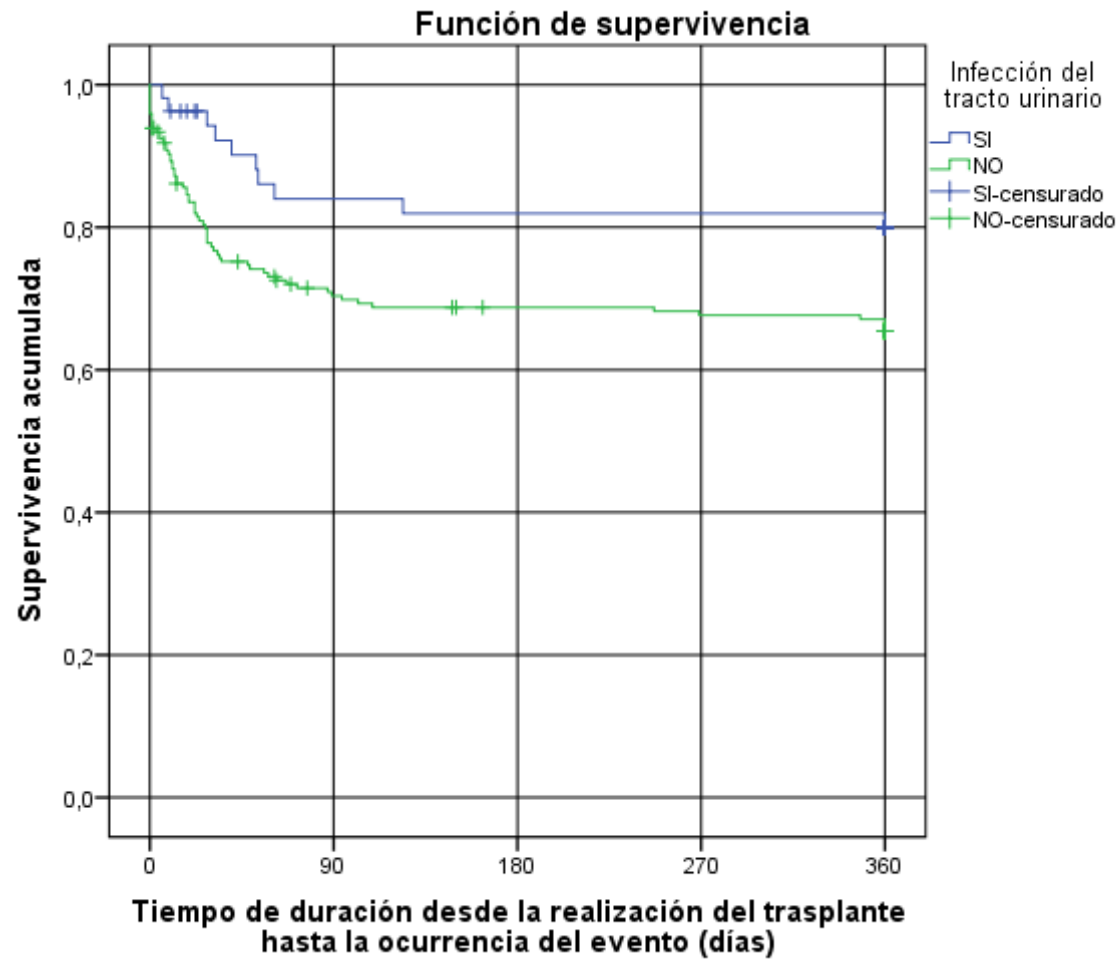
	Mean <sup>a</sup>				Median			
	Estimate	Std. Error	95% Confidence Interval		Estimate	Std. Error	95% Confidence Interval	
			Lower Bound	Upper Bound			Lower Bound	Upper Bound
Infección del tracto urinario								
SI	303,304	18,151	267,728	338,880	.	.	.	.
NO	254,648	11,266	232,566	276,730	.	.	.	.
Overall	265,058	9,677	246,092	284,024	.	.	.	.

a. Estimation is limited to the largest survival time if it is censored.

#### Overall Comparisons

	Chi-Square	df	Sig.
Log Rank (Mantel-Cox)	4,364	1	,037

Test of equality of survival distributions for the different levels of Infección del tracto urinario.



Este artículo está bajo una [licencia de Creative Commons Reconocimiento 4.0 Internacional](https://creativecommons.org/licenses/by/4.0/), los lectores pueden realizar copias y distribución de los contenidos por cualquier medio, siempre que se mantenga el reconocimiento de sus autores.